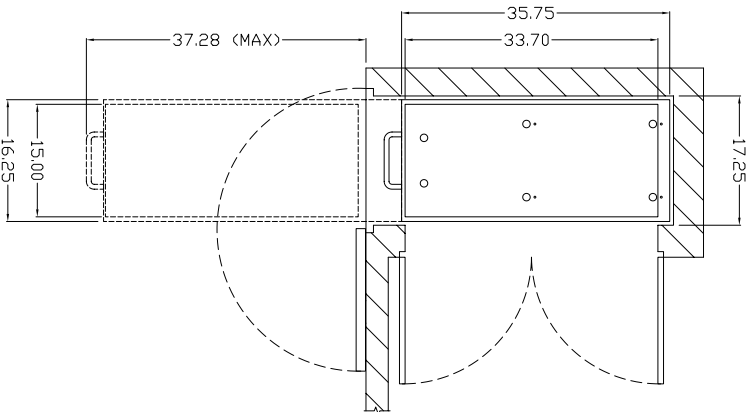


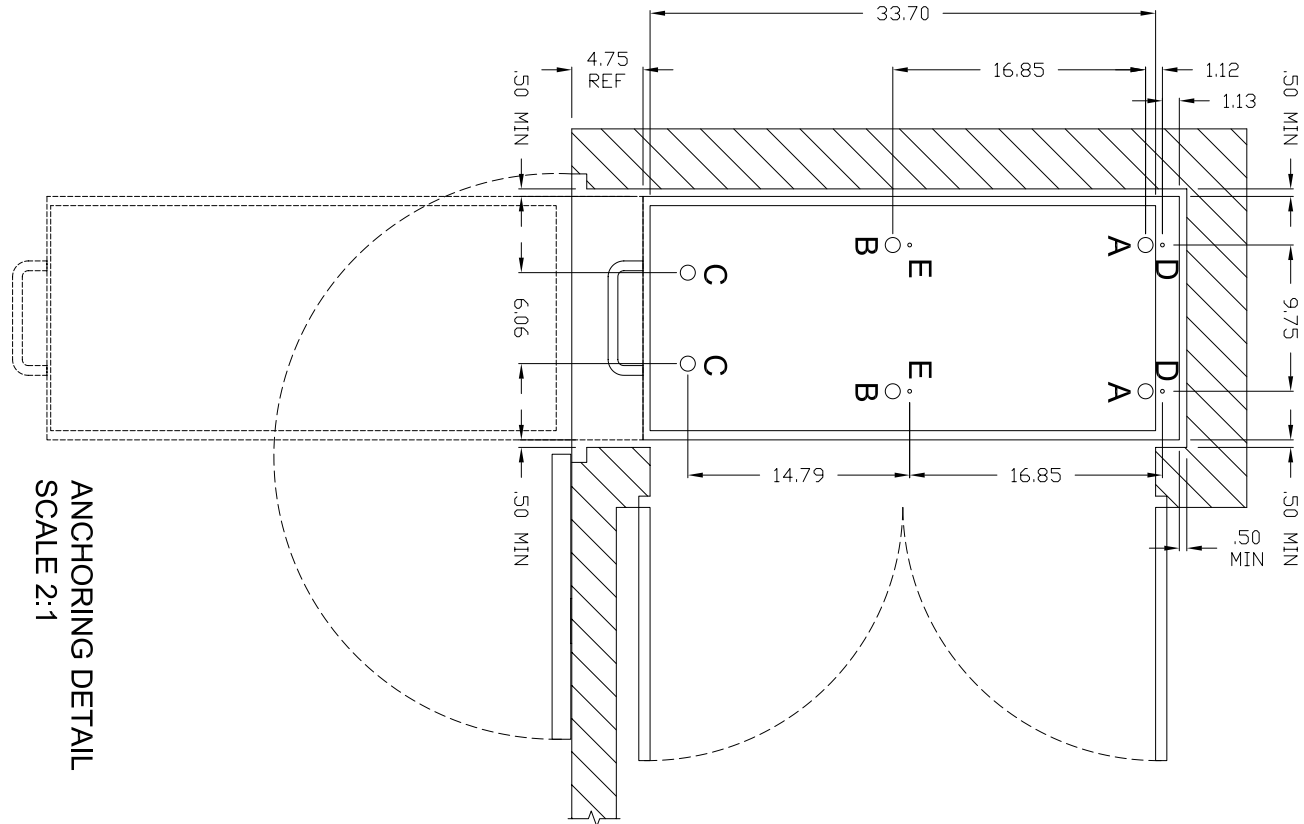
FORCES AT BOLT POINTS & FOOT POINTS

SYSTEM CONFIG	CARRIAGE WIDTH	CARRIAGE LENGTH	WORST CASE FORCE REQUIREMENTS					
			LEVELER A ¹ SUPPORT	LEVELER B ¹ SUPPORT	LEVELER C ¹ SUPPORT	ANCHOR D ² (PULL OUT)	ANCHOR E ² (PULL OUT)	
SINGLE ENTRY LEFT/RIGHT	15"	24"	400#	400#	74#	900#	350#	650#
	15"	30"	400	400	74	900	350	650
	15"	33.7"	400	400	74	900	350	650
	15"	36"	400	74	900	350	650	

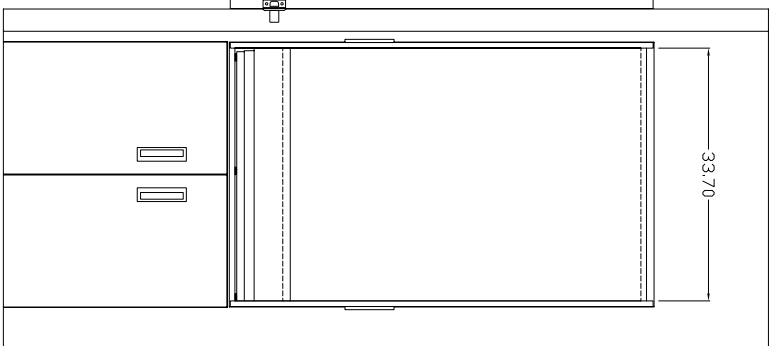
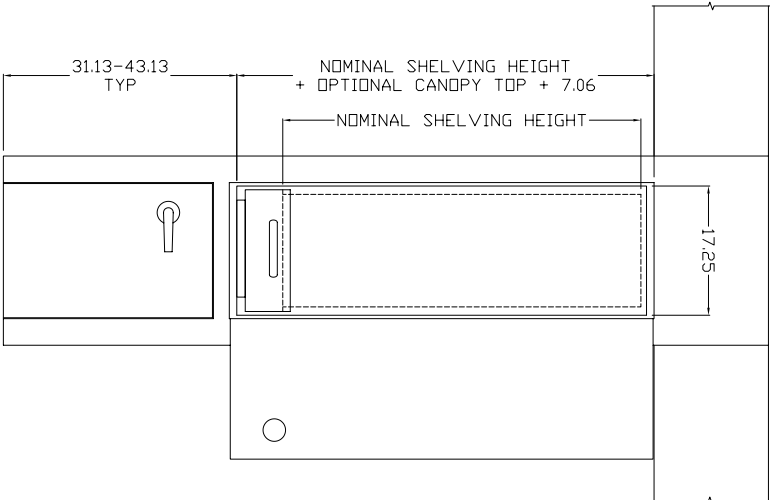
(SHELF WEIGHT = 18#/ft LENGTH-WIDTH, UNIFORMLY DISTRIBUTED)
ANCHORS TO BE 5/16"-18 GRADE 5 THREADED BOLTS
DO NOT USE WOOD AS A MOUNTING SUBSTRATE TO AVOID LONG TERM INDENTING



SINGLE SIDED
SINGLE 15 X 33.7 CARRIAGE




ANCHORING DETAIL
SCALE 2:1



ENCLOSURE CONSTRUCTION GUIDELINES

- NOTES:
- 1.) CABINET/CLOSET AND MOUNTING SURFACE BY OTHERS.
 - 2.) LOCAL FIRE CODES MAY APPLY. THE RESPONSIBILITY TO ENSURE APPLICABLE CODES HAVE BEEN MET IS THAT OF OTHERS.
 - 3.) DOORS, WALLS, AND WALL THICKNESSES SHOWN ARE FOR ILLUSTRATIVE PURPOSES ONLY. ACTUAL DIMENSIONS TO BE FINALIZED BY OTHERS.
 - 4.) DIMENSIONS SHOWN ARE TO PROVIDE FINISHED OPENING SIZES ONLY AND INCLUDE RECOMMENDED MINIMUM CLEARANCES.
- (DIMENSIONS SUBJECT TO CHANGE WITHOUT NOTICE.)

Copyright © 2014 by SpaceSaver Corporation. All rights reserved. This material is proprietary and confidential and the disclosure, reproduction, distribution, or use of this material without the written permission of SpaceSaver Corporation is expressly prohibited by law.

TOLERANCES UNLESS OTHERWISE SPECIFIED			 SpaceSaver FOOT ANIMATION WISCONSIN		
XX ± .01 XXX ± .005 X ± .1"			TITLE		
Corestor™ PATIENT SERVER SINGLE 15 X 33.7 GUIDE					
DWN BY	DATE	SIZE	FSOM NO.	DWG NO.	REV
SRI	1/26/09	D	58928	Corestor S 15x33.7	A
APVD	DATE	SCALE	NTS	SHEET	OF